



You each have a Truro College Prospectus that you can look through and take home with you!

Campus Map

& subject area locations

Allen

Catering - Professional Cookery
Childcare & Education
Health & Social Care
Spires Restaurant

Calenick

Hair, Beauty & Complementary Therapies

Fal

University Courses

Helford

English & Languages
IB Diploma
Music & Performing Arts

Kenwyn

Computing & ICT
Mathematics
Media & Photography
Part-time Courses

Lynher

Sport & Public Services

Mylor

Apprenticeships
Foundation Studies & Vocational Skills
Music & Performing Arts
Science
Student Services
Truro & Penwith College Business

Percuil

Business & Administration
Law

Seaton

Automotive, Engineering & Construction

Tresillian

Humanities & Social Science
Science

White

Art & Design



Main Reception

Call in for advice on transport and to pick up an application form.

Get refreshed

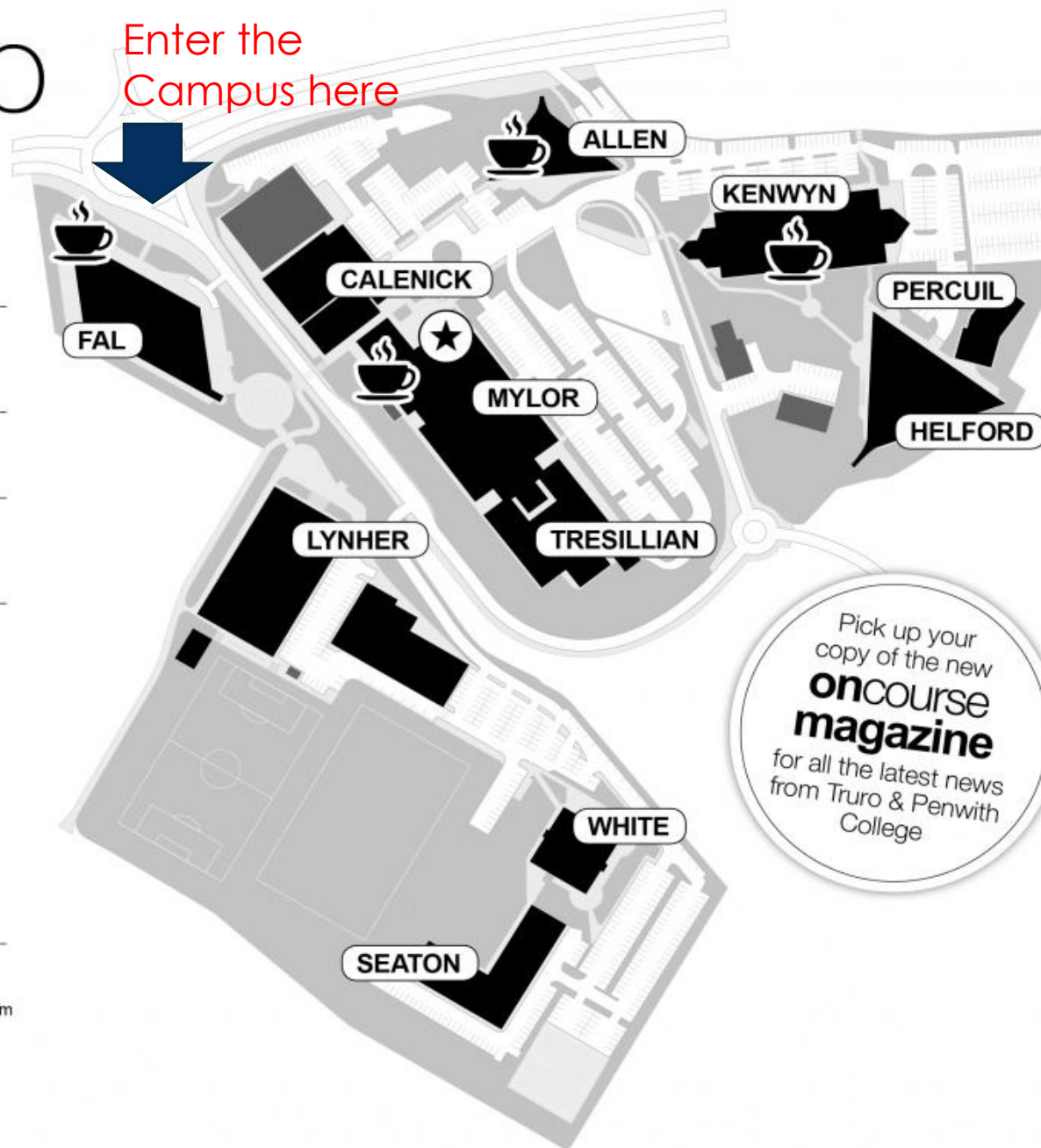
Mylor Refectory: 10am - 2.30pm

Kenwyn Refectory: 10am - 2.30pm

Spires Coffee Bar (Allen): 10am - 3pm

Spires Express (Allen): 11am - 2pm

Fal Coffee Bar: 10am - 2.30pm



This is a brief introduction to the courses available at Truro and Penwith College – this would usually be delivered through an assembly by the Deputy Principle of the College.

Click here ↘

https://youtu.be/Xk-Oae_EJTA



This is a far more detailed presentation that would normally be delivered to you and your parents/carers on the 'special' Redruth information evening at Truro College.

This presentation will be emailed out to parents and carers as it is designed for them. It will also be available to view on the school website.

<https://www.youtube.com/watch?v=kfxHM4gfX3w>



The subject spotlight includes course information and subject specific videos made by the staff for you – Please take note of the link and revisit the site before making any decisions about your Post 16 pathway!

Click here ↩

www.truro-penwith.ac.uk/subjectspotlight



Virtual Campus Tours

You can choose to view either Penwith or Truro college... or both! The campus tour allows you to look inside each building to see which subjects are taught there. It also allow you to see the facilities available.

Click here ↘

<https://www.truro-penwith.ac.uk/public-facilities/360-tours>



2021 PROSPECTUSES!!

This is an opportunity for you to look at the courses available to you in September 2021

You must think about the following:

- ▶ Course entry requirements
- ▶ Structure of the course
- ▶ Upon the successful completion of the course – what qualification/s will I achieve?
- ▶ What are my plans once I have completed the Post 16 Course?

POST 16 COURSES AT TRURO COLLEGE

Click each link to find out more about the course

- ▶ [FOUNDATION STUDIES \(ENTRY & LEVEL 1\)](#)
- ▶ [EMPLOYABILITY \(PENWITH, LEVEL 2\)](#)
- ▶ [PERSONAL & PROFESSIONAL DEVELOPMENT \(TRAINEESHIPS, LEVEL 2 & 3\)](#)
- ▶ [PROGRESSION \(LEVEL 1 & 2\)](#)
- ▶ [VOCATIONAL COURSE \(ENTRY - LEVEL 3\)](#)
- ▶ [EXTENDED DIPLOMA \(LEVEL 3\)](#)
- ▶ [SUBSIDIARY DIPLOMA \(LEVEL 3\)](#)
- ▶ [APPRENTICESHIP \(LEVEL 2 & 3\)](#)
- ▶ [A LEVEL \(LEVEL 3\)](#)
- ▶ [IB DIPLOMA \(LEVEL 3\)](#)
- ▶ [ACCESS TO HIGHER EDUCATION \(LEVEL 3\)](#)

A LEVELS

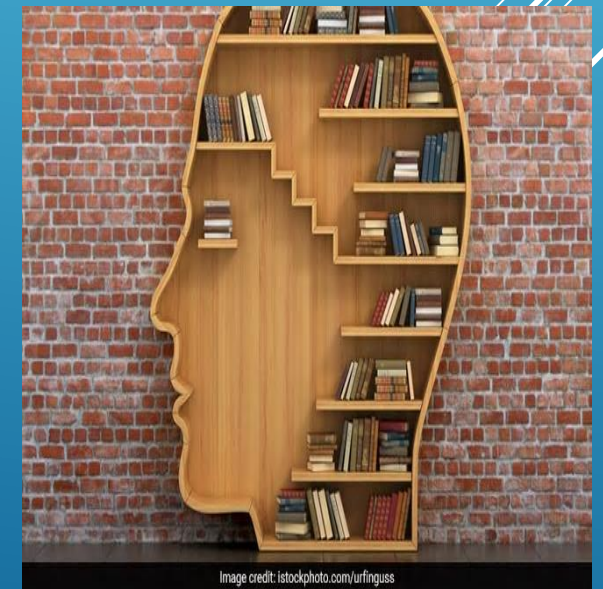
What are A Levels?

Advanced Level programmes that consist of formal lectures, class activities and assessments, set homework and problem-solving.

- ▶ Students must study a minimum of 3 A levels
- ▶ Academic assessment for Linear A Levels will take place at the end of the two years of study.

Entry requirements:

- ▶ A Level choices at Grade 6 or above
- ▶ With a minimum of grade 5 in both English and Maths



ARE YOU CONSIDERING UNIVERSITY?



UK UNIVERSITY RANKINGS 2021

Zoom in to view the top 25 Universities in the UK

Top 25 universities		Entry standards	Student satisfaction	Research quality	Graduate prospects	Overall score
1	Cambridge	100	n/a	83	87	100
2	Oxford	97	n/a	83	83	99
3	St Andrews	100	87	78	80	96
4	London School of Economics	79	76	84	86	94
5	Imperial College	89	80	84	90	91
6	Loughborough	71	84	74	87	90
7	Durham	90	80	78	85	90
8	Lancaster	71	81	79	89	89
9	Bath	82	82	79	87	87
10	University College London	82	79	80	84	86
11	Warwick	77	82	81	83	85
12	Exeter	77	81	77	86	83
13	Birmingham	75	80	77	85	81
14	Bristol	80	80	79	81	81
15	Edinburgh	88	77	79	77	81
16	Leeds	75	81	78	81	80
17=	Manchester	79	80	79	80	80
17=	Southampton	73	81	79	82	80
19	Glasgow	94	80	77	85	79
20=	King's College London	81	78	81	85	77
20=	Nottingham	71	80	77	86	77
22	York	72	83	79	82	77
23	Newcastle	72	80	77	86	76
24	Royal Holloway	64	82	77	74	76
25	East Anglia	65	81	78	77	75

Arts, Drama & Music institutions		Entry standards	Student satisfaction	Research quality	Graduate prospects	Overall score
1	Courtauld Institute of Art	100	80	87	74	100
2	Royal College of Music	73	79	75	100	96
3=	Guildhall School of Music & Drama	85	83	61	85	95
3=	Royal Central School of Speech and Drama	81	n/a	76	79	95
5	Royal Conservatoire of Scotland	90	80	71	88	93
6	Royal Academy of Music	78	79	69	93	91
7	Royal Northern College of Music	78	82	77	87	84
8	Conservatoire for Dance and Drama	74	85	n/a	73	79
9	Trinity Laban Conservatoire of Music and Dance	74	80	70	77	75
10	Leeds Arts University	89	83	n/a	57	70
11	Liverpool Institute for Performing Arts	82	83	n/a	71	66
12	Glasgow School of Art	100	75	69	64	65
13	Rose Bruford College	70	81	57	62	51
14	Plymouth College of Art	76	79	n/a	49	41

Top 10 for student satisfaction	
1	St Andrews
2	Aberystwyth
3	Plymouth Marjon
4=	West London
4=	Bolton
6	Loughborough
7	Abertay
8	UWE Bristol
9=	Dundee
9=	Bangor
9=	Arts University Bournemouth

Top 10 for graduate prospects	
1	St George's
2	Imperial College
3	Lancaster
4	London South Bank
5	Bath
6	Loughborough
7	Cambridge
8	London School of Economics
9	Nottingham
10	Newcastle



See full rankings, 70 subject tables and guides, university profiles and advice for all stages of your application at thecompleteuniversityguide.co.uk

IB DIPLOMA (LEVEL 3)



What is the IB (International Baccalaureate)?

- ▶ The IB is an excellent alternative to A Levels. You can continue to study a broad range of subjects at Level 3. You will study 3 subjects at Higher Level and 3 subjects at Standard Level plus additional elements.
- ▶ This is a 2 year course
- ▶ Entry requirements:
- ▶ 5 GCSEs at grade 5 or above in a broad range of subjects, including English and Maths. With grade 6 or above in subjects appropriate to Higher Level options.

APPRENTICESHIP (LEVEL 2 AND 3)

- ▶ A minimum of one year!
- ▶ You will need to be committed, motivated, enthusiastic and reliable.
- ▶ You must formally apply for an apprenticeship with the company advertising the post
- ▶ Typically, you will be interviewed prior to starting an Apprenticeship programme
- ▶ £119 per week – full time
- ▶ At least 30 hours per week plus a mixture of taught courses, workshops, work-based assessments and e-learning



VOCATIONAL ENTRY LEVEL – LEVEL 3

Vocational courses will enable you to develop occupational knowledge and progress into industry. There are a variety of subjects to study at a various levels:

- ▶ Hair and beauty
- ▶ Construction
- ▶ Catering
- ▶ Motor vehicle
- ▶ Secretarial

Entry requirements vary depending on the level of entry and the choice of subject to study.



- ▶ Cornwall College – Campuses at Camborne, St Austell and Newquay
- ▶ Duchy College – Campuses at Rosewarne and Stoke Climsland
- ▶ Bicton College - Devon
- ▶ Falmouth Marine School

Click the link below to watch a brief introduction to student life across the Cornwall College campuses

<https://www.youtube.com/watch?v=3aeHBTijrhA>

A decorative graphic consisting of several parallel white lines of varying lengths, slanted upwards from left to right, located in the bottom right corner of the slide.

CORNWALL COLLEGE PROSPECTUS

- ▶ Physical copies of Cornwall College Prospectuses must be ordered online via their website.
- ▶ To view the 2020 digital copy, please click here ↴

<https://www.cornwall.ac.uk/wp-content/uploads/2020/01/cornwall-college-further-education-prospectus-2020.pdf>



Wednesday 21 October from 12pm to 6pm

Virtual University Fair

We've designed the fair to feel **exactly like a Careers Fair, just on your laptop**. You'll be able to visit a virtual Exhibition Hall full of over 90 universities, colleges and apprenticeship providers and scroll through their colourful and informative stands and chat directly to representatives. We'll also have a virtual Auditorium where webinars will be taking place throughout the day.



Webinars

- ▶ 1pm - Personal Statement
- ▶ 2pm - Higher and Degree Apprenticeships
- ▶ 3.30pm - Creative Careers
- ▶ 5pm - Personal Statement

This is just a selection of the webinars taking place on the day.

For full details click this link, it will also be available on Redruth School's Website:

<https://ukunisearch-west.vfairs.com/en/>